



McIntosh Laboratory, Inc. 2 Chambers Street Binghamton, New York 13903-2699 Phone: 607-723-3512 www.mcintoshlabs.com

D1100
Digital Preamplifier
Owner's Manual





Important Safety Information is supplied in a separate document “Important Additional Operation Information Guide”

Thank You

Your decision to own this McIntosh D1100 Digital Preamplifier ranks you at the very top among discriminating music listeners. You now have “The Best.” The McIntosh dedication to “Quality,” is assurance that you will receive many years of musical enjoyment from this unit.

Please take a short time to read the information in this manual. We want you to be as familiar as possible with all the features and functions of your new McIntosh.

Please Take A Moment

The serial number, purchase date and McIntosh Dealer name are important to you for possible insurance claim or future service. The spaces below have been provided for you to record that information:

Serial Number: _____

Purchase Date: _____

Dealer Name: _____

Technical Assistance

If at any time you have questions about your McIntosh product, contact your McIntosh Dealer who is familiar with your McIntosh equipment and any other brands that may be part of your system. If you or your Dealer wish additional help concerning a suspected problem, you can receive technical assistance for all McIntosh products at:

McIntosh Laboratory, Inc.
2 Chambers Street
Binghamton, New York 13903
Phone: 607-723-3512
Fax: 607-724-0549

Customer Service

If it is determined that your McIntosh product is in need of repair, you can return it to your Dealer. You can also return it to the McIntosh Laboratory Service Department. For assistance on factory repair return procedure, contact the McIntosh Service Department at:

McIntosh Laboratory, Inc.
2 Chambers Street
Binghamton, New York 13903
Phone: 607-723-3515
Fax: 607-723-1917

Table of Contents

Safety Instructions	2
(Separate Sheet)	Important Additional
	Operation Information Guide
Thank You and Please Take a Moment.....	2
Technical Assistance and Customer Service	2
Table of Contents	2
General Information	3
Connector and Cable Information	3
Introduction.....	4
Performance Features	4
Dimensions	5
Installation	6
Connections:	
Rear Panel Connections.....	7
(Separate Sheet)	Mc3A
Connecting Components for DAC Operation and Preamplifier Operation	8-9
(Separate Sheets).....	Mc1A, Mc1B, Mc2A, MC2B
Input Assignment Chart	
(Separate Sheet)	Mc5A, Mc5B

Remote Control:

HR085 Remote Control Push-buttons	10
How to use the HR085 Remote Control	11

Front Panel:

Front Panel Displays, Controls, Push-buttons and Jack.....	12
--	----

Setup:

How to Operate the Setup Mode	13
Default Settings, Firmware Version.....	13
Input Settings	13
Rename Input	14
Output Settings	15
Power Control Triggers.....	16
Data Ports, Comm Port Baud Rate	17
Remote Control Codes.....	17
IR Sensor, Power Mode and Factory Reset	18

Operation:

How to Operate when in DAC Mode.....	19
How to Operate when in Preamplifier Mode.....	20
Trim Functions.....	20-21
Mute, Outputs 1&2, Trim, Output Meters	22
Headphone Jack	22
How to make a Recording.....	23
Digital Input Display.....	23
USB Input and Installing Software.....	23-24
Windows Sound and Control Panel Settings	24
USB Music Playback.....	24-25
Reset of Microprocessors.....	25


Additional Information:

Specifications.....	26
Packing Instruction.....	27

General Information

- For additional connection information, refer to the owner's manual(s) for any component(s) connected to the D1100 Digital Preamplifier.
- The Main AC Power going to the D1100 and any other McIntosh Component(s) should not be applied until all the system components are connected together. Failure to do so could result in malfunctioning of some or all of the system's normal operations. When the D1100 and other McIntosh Components are in their Standby Power Off Mode, the Microprocessor's Circuitry inside each component is active and communication is occurring between them.
- The Output 1 and 2 Connections (Balanced and Unbalanced) can be used simultaneously, connected to different Power Amplifiers.
- The D1100 internal Digital Circuitry is designed to decode 2-channel PCM (Pulse Code Modulation) and DSD (Direct Stream Digital) Digital Signals. The Coaxial, Optical and AES/EBU Digital Audio Inputs are for PCM Digital Signals. The Digital MCT and USB Audio Inputs are for PCM and DSD Digital Signals. Other Digital Audio Signal Format Types will cause the Audio Outputs of the D1100 to be muted and the Front Panel Information Display will indicate an error message.
- Sound Intensity is measured in units called Decibels and "dB" is the abbreviation.
- The McIntosh D1100 is factory configured for immediate use. It can also be customized to complement the components making up your system. Refer to the D1100 "Setup Mode" starting on page 13 for additional information.
- The Remote Control Supplied with the D1100 Preamplifier is capable of operating other com-

ponents. For additional information go to www.mcintoshlabs.com.

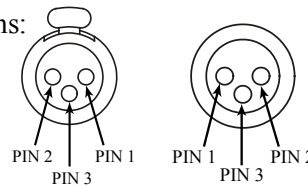
- The IR Input, with a 3.5mm mini phone jack, is configured for non-McIntosh IR sensors such as a Xantech Model HL85BK Kit. Use a Connection Block such as a Xantech Model ZC21 when two or more IR sensors need to be connected to the D1100. The signal from a connected External IR Sensor will have priority over the signal from the Front Panel IR Sensor.
- When the D1100 is connected to an Analog only Preamplifier via the supplied compatible External Digital Control Cable, Remote Control Operation via RS232 Connection should be made only to the Analog only Preamplifier, not the D1100.
- When discarding the unit, comply with local rules or regulations. Batteries should never be thrown away or incinerated but disposed of in accordance with the local regulations concerning battery disposal. 
- For additional information on the D1100 and other McIntosh Products please visit the McIntosh Web Site at www.mcintoshlabs.com.

Connector and Cable Information

XLR Connectors

Below is the Pin configuration for the XLR Balanced Input and Output Connectors on the D1100. Refer to the diagrams for connections:

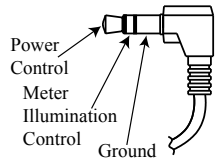
- PIN 1: Shield/Ground
- PIN 2: + Output
- PIN 3: - Output



Power Control /Trigger Connectors

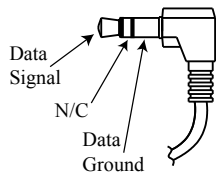
The D1100 POWER CONTROL / TRIGGER Output Jacks send Power On/Off Signals (+12 volt/0 volt) when connected to other McIntosh Components.

An additional connection is for controlling the illumination of the Power Output Meters on McIntosh Power Amplifiers. A 3.5mm stereo mini phone plug is used for connection to the Power Control / Trigger Outputs on the D1100.



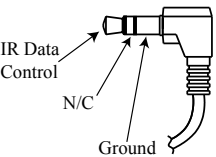
Data Port Connectors

The D1100 Data Out Ports send Remote Control Signals to Source Components. A 3.5mm stereo mini phone plug is used for connection.



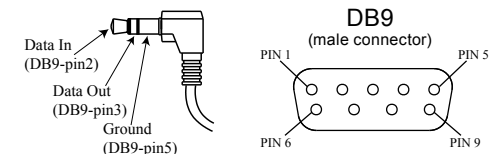
IR IN Port Connectors

The IR IN Port also uses a 3.5mm stereo mini phone plug and allows the connection of other brand IR Receivers to the D1100.



RS232 Data Port Cable

The RS232 Data Cable is a 3.5mm stereo mini phone plug to a subminiature DB 9 connector:





Introduction

The McIntosh D1100 Digital Preamplifier is one of the finest Preamplifiers ever created with connections for digital sources. The D1100 Outputs have the ability to drive multiple Power Amplifiers. The D1100 reproduction is sonically transparent and absolutely accurate. The McIntosh Sound is “The Sound of the Music Itself.”

Performance Features

• Electromagnetic Output Switching

Digital Logic Circuits drive Electromagnetic Switches for the Balance and Unbalanced Outputs 1 and Outputs 2 for reliable, noiseless, distortion free switching.

• Digital Audio Inputs

The Digital Inputs decode PCM and DSD Signals from external sources. Coaxial, Optical, BNC and AES/EBU Inputs process Digital Signals up to 192kHz with 24-Bit resolution. The Digital MCT Input Circuitry directly decodes SACD/CD signals from an external Transport component. The USB Input for streaming audio processes Digital Signals up to 384kHz with 32-Bit resolution, decodes up to DSD256 Digital Signals and DXD 24-Bit with a sampling rate up to 384kHz.

• Dual Operating Modes

The D1100 has two modes of operation. One mode is as a high performance full function Digital Preamplifier. The second mode is as a high performance Digital to Analog Converter (DAC) which integrates with an Analog only Preamplifier via a special Digital Control Interface.

• Precision Tracking Volume Control

Volume levels are controlled by a Precision Balanced Digitally Controlled Attenuator System with an Optical Encoder Rotary Control. This assures a 0.1dB tracking accuracy between channels. There are 214 individual 0.5dB volume level steps with no noise as the volume level is changed.

• Variable Rate Volume and Balance Controls

The D1100 Preamplifier’s Volume and Balance Control Circuitry provides an ideal rate of change with control rotation.

• HXD® for Headphones

The D1100 Headphone Crossfeed Director Circuitry (HXD®) improves the sound localization for Headphone Listening. HXD™ restores the directionality component of the spatial sound stage normally heard with Loudspeaker listening.

• Alphanumeric Fluorescent Display

The Front Panel Information Display indicates the Source Selection, Volume/Balance Levels and Setup Mode Selections. The display intensity is adjustable.

• Remote Control with External Sensor Input

The Remote Control provides control of the D1100 operating functions and McIntosh Source Components connected to it. Enjoy your McIntosh System from another room in your home by connecting an external sensor.

• Power Control Output and Trigger Assignment

A Power Control connection for convenient Turn-On of McIntosh Power Amplifiers, Source Components and Accessories is included. The Power Control Trigger Outputs may be assigned to activate when a given Input/Output is selected.

• Dual Special Power Supply

Two fully separate and regulated Power Supplies with special R-Core Power Transformers ensure stable noise free operation even though the power line varies.

• LED Front Panel Illumination

The even Illumination of the Front Panel is accomplished by multiple extra long life Light Emitting Diodes (LEDs) arranged with a special orientation.

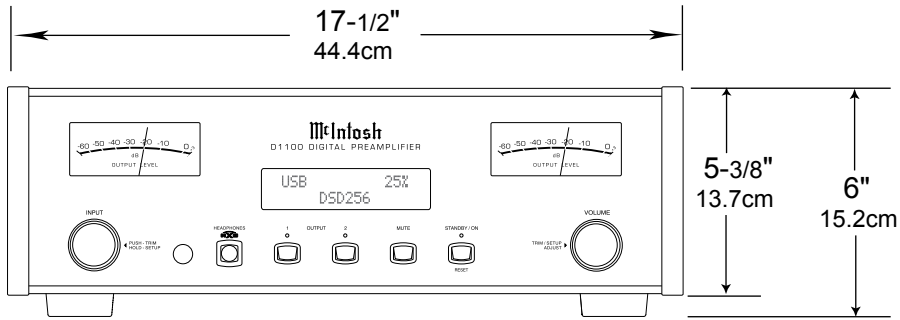
• Glass Front Panel and Super Mirror Chassis Finish

The famous McIntosh Illuminated Glass Front Panel and the Stainless Steel Chassis with Super Mirror Finish ensures the pristine beauty of the D1100 will be retained for many years.

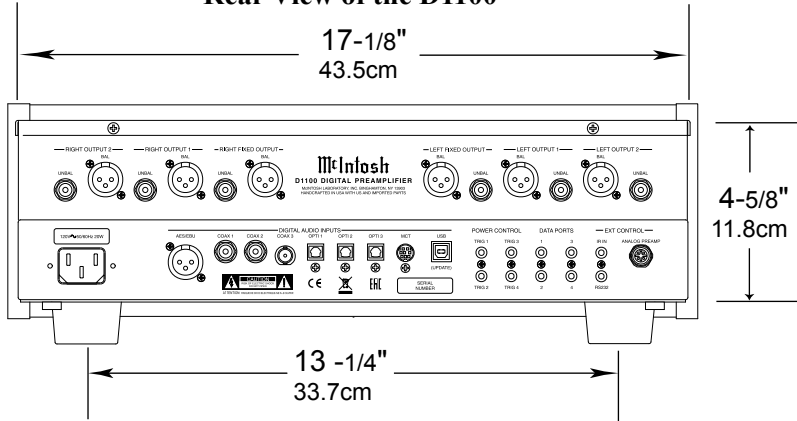
Dimensions

The following dimensions can assist in determining the best location for your D1100. There is additional information on the next page pertaining to installing the D1100 into cabinets.

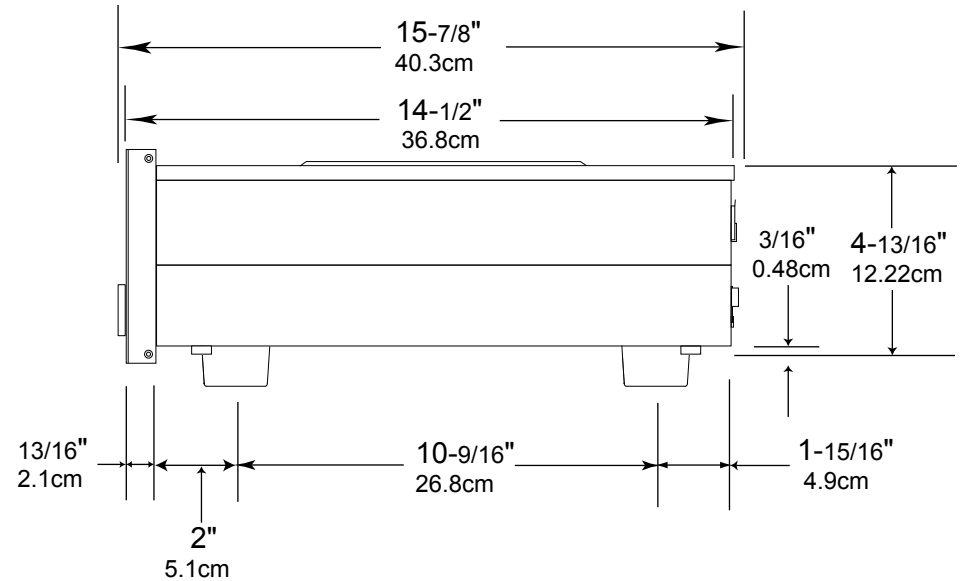
Front View of the D1100



Rear View of the D1100



Side View of the D1100



Installation

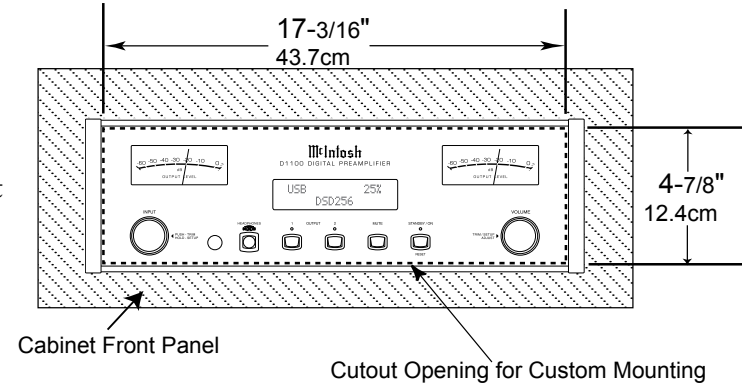
The D1100 can be placed upright on a table or shelf, standing on its four feet. It also can be custom installed in a piece of furniture or cabinet of your choice. The four feet may be removed from the bottom of the D1100 when it is custom installed as outlined below. The four feet together with the mounting screws should be retained for possible future use if the D1100 is removed from the custom installation and used free standing. The required panel cutout, ventilation cutout and unit dimensions are shown.

Always provide adequate ventilation for your D1100. Cool operation ensures the longest possible operating life for any electronic instrument. Do not install the D1100 directly above a heat generating component such as a high powered amplifier. If all the components are installed in a single cabinet, a quiet running ventilation fan can be a definite asset in maintaining all the system components at the coolest possible operating temperature.

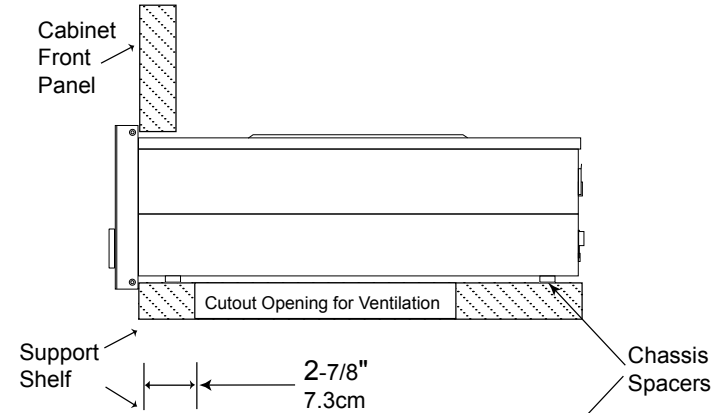
A custom cabinet installation should provide the following minimum spacing dimensions for cool operation.

Allow at least 2 inches (5.1cm) above the top, 2 inches (5.1cm) below the bottom and 1 inch (2.5cm) on each side of the Preamplifier, so that airflow is not obstructed. Allow 19 inches (48.3cm) depth behind the front panel. Allow 1-7/16 inch (3.7cm) in front of the mounting panel for knob clearance. Be sure to cut out a ventilation hole in the mounting shelf according to the dimensions in the drawing.

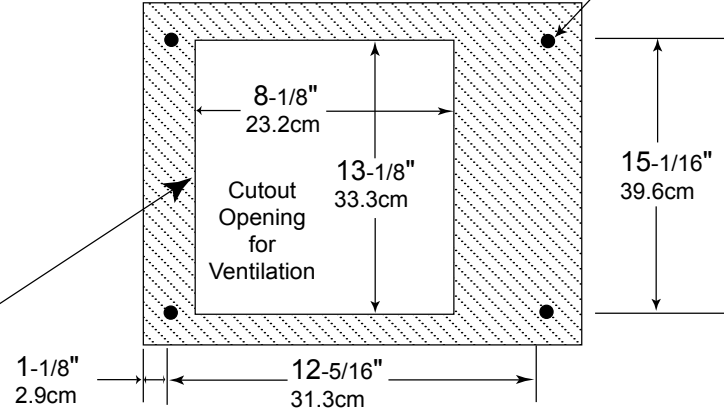
**D1100 Front Panel
Custom Cabinet Cutout**



**D1100 Side View
in Custom Cabinet**



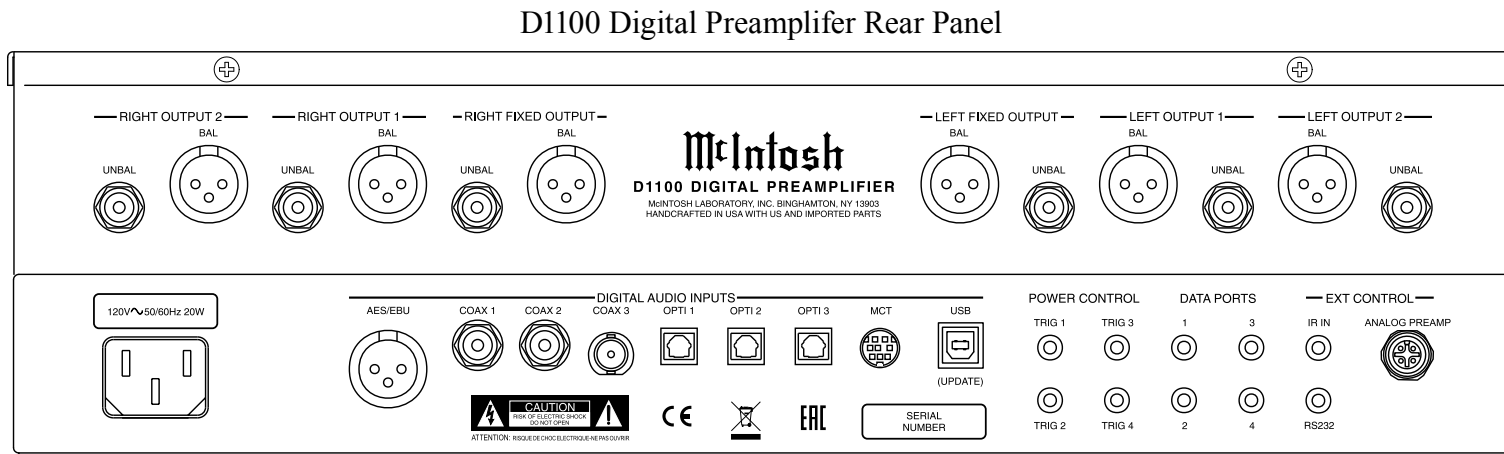
**D1100 Bottom View
in Custom Cabinet**



Note: Center the cutout horizontally on the unit. For purposes of clarity, the above illustration is not drawn to scale.

Rear Panel Connections

The identification of Rear Panel Connections for the D1100 Digital Preamplifier is located on a separate folded sheet contained in the Owner's Manual Packet. Refer to separate sheet "Mc3A" for the Rear Panel Connections.





Connecting Components

The D1100 has two modes of operation. The first mode is as a Preamplifier. The second operating mode is as a DAC (Digital-to-Analog Converter) when connected to a compatible Analog only Preamplifier with a special control interface.

The first set of connecting instructions is for connecting the D1100 for use as a DAC and the second set is for when the D1100 is used as a Preamplifier.

D1100 CONNECTIONS FOR DAC OPERATION:

The connection instructions below, together with the D1100 Input/Output/Control Connection Diagrams, are located on the separate folded sheets “**Mc1A** and **Mc2A**”. Your system may vary from this, however the actual components would be connected in a similar manner. For additional information refer to “Connector and Cable Information” on page 3.

- Notes: 1. The D1100 allows renaming of the Audio Inputs Names as indicated on the Front Panel Information Display. Example, “MCT” may be changed to “CD- 1” or your own personal preference. Refer to Setup “Renaming Input” on page 14.*
- 2. For convenience, an “Input Assignment Chart” on a separate sheet “**Mc5B**” has been provided to keep track of changes.*

Power Control Connections:

1. Connect a Control Cable from the D1100 POWER CONTROL TRIG 1 Jack to the Digital Audio Player Trigger In Jack.
2. Connect a Control Cable from the Digital Audio Player Trigger Out Jack to the SACD Transport Power Control In Jack.
3. Connect a Control Cable from the SACD Transport Power Control Out Jack to the Tuner Power Control In Jack.
4. Connect a Control Cable from the Tuner Power

Control Out Jack to the Media Server Pwr Ctrl (Power Control) In Jack.

5. Connect any additional Components in a similar manner, as outlined in steps 1 thru 4.

Data Control Connections:

6. Connect a Control Cable from the D1100 DATA PORTS 2 Jack to the TUNER Data In Jack.

Note: To have source components (e.g. Tuner) respond only to their specific “Function Commands” issued by the Remote Control, it is first necessary change the Data Ports Default settings for the “Tuner” Input. Refer to Setup “Data Port Assignment” on page 17.

7. Connect a Control Cable from the D1100 CD DATA PORT 3 Jack to the SACD/CD Transport Data In Jack.
8. Connect a Control Cable from the D1100 DATA PORT 1 Jack to the Media Server Data In Jack.
9. Connect any additional McIntosh Components in a similar manner, as outlined in steps 6 thru 8.

Digital Audio Connections:

10. Connect a Digital Coaxial Cable from the D1100 DIGITAL AUDIO INPUT COAX 1 Connector to the Digital Audio Player Digital Coax Output Jack.
11. Using the “DIN Cable-Twisted Pair” cable (supplied with a MCT Transport) from the D1100 MCT DIGITAL AUDIO INPUT Connector to the SACD/CD Transport DIN Output Connector.
12. Connect a Digital Optical Cable from the D1100 DIGITAL AUDIO INPUT OPTI 2 Connector to the AM/FM Tuner Digital OPTICAL Output Connector.
13. Connect a Digital Coaxial Cable from the D1100 DIGITAL AUDIO INPUT OPTI 1 Connector to the Media Server Digital Optical Output Connector.

14. Connect any additional McIntosh Components in a similar manner, as outlined in steps 10 thru 13.

Optional USB Connection:

15. Connect a USB cable with (type A to type B) connectors from the D1100 USB DIGITAL AUDIO INPUT Connector to an available USB connector on the computer.

Audio Output Connection:

16. Connect XLR Audio Cables from the D1100 FIXED Balanced RIGHT and LEFT OUTPUTS to the Analog only Preamplifier Balanced Number 6 (Left and Right) Inputs.

Preamplifier Control Interconnection:

17. Connect the Data Control Cable (supplied with the compatible Analog only Preamplifier) from the D1100 EXTERNAL CONTROL ANALOG PREAMPLIFIER connector to the Analog only Preamplifier Digital Preamplifier Connector.

AC Power Cord Connections:

18. Connect the D1100 to a live AC Outlet using the supplied Power Supply Cord.

D1100 CONNECTIONS FOR PREAMPLIFIER OPERATION:

The D1100 has the ability to automatically switch power On/Off to Source Components via the Power Control connections. The Data Port Connections allow for the remote operation of basic functions using the D1100 Remote Control HR085. With an external sensor connected to the D1100, remote control operation of the system is possible from another room and/or when the D1100 is located in a cabinet with the doors closed.

The connection instructions below, together with the D1100 Input/Output/Control Connection Diagrams located on the separate folded sheets “**Mc1B**

and **Mc2B**”, are an example of a typical audio system. Your system may vary from this, however the actual components would be connected in a similar manner. For additional information refer to “Connector and Cable Information” on page 3.

Notes: 1. The D1100 allows renaming of the Audio Inputs Names as indicated on the Front Panel Information Display. Example, “MCT” may be changed to “CD- 1” or your own personal preference. Refer to Setup “Renaming Input” on page 14.
2. For convenience, an “Input Assignment Chart” on a separate sheet “Mc5A” has been provided to keep track of changes.

Power Control Connections:

1. Connect a Control Cable from the D1100 POWER CONTROL TRIG 1 Jack to the Digital Audio Player Trigger In Jack.
2. Connect a Control Cable from the Digital Audio Player Trigger Out Jack to the SACD Transport Power Control In Jack.
3. Connect a Control Cable from the Tuner Power Control Out Jack to the Media Server Pwr Ctrl (Power Control) In Jack.
4. Connect a Control Cable from the Media Server Pwr Ctr Out Jack to the Power Amplifier Power Control In Jack.
5. Connect a Control Cable from the D1100 POWER CONTROL TRIG 3 Jack to the Phono Preamplifier Pwr Ctrl Trig In Jack.
6. Connect a Control Cable from the Phono Preamplifier Pwr Ctrl Trig Out Jack to the Turntable Power Control In Jack.

Notes: 1. To active the TRIGger 3 Automatic Power On/Off for the OPTical 3 Input, refer to “Setup, Power Control Triggers” on page 16.
2. If two separate Power Amplifiers are used (Left and Right Channels), connect the Power

Control Output of the first Amplifier to the Power Control Input on the second Amplifier.

7. Optionally, connect a Control Cable from the D1100 POWER CONTROL TRIG (Trigger) 2 Jack to the Power Amplifier (Secondary Room) Power Control In Jack.
8. Connect any additional Components in a similar manner, as outlined in steps 1 thru 6.

Data Control Connections:

9. Connect a Control Cable from the D1100 DATA PORTS 2 Jack to the TUNER Data In Jack.
Note: To have source components (e.g. Tuner) respond only to their specific “Function Commands” issued by the Remote Control, it is first necessary to change the Data Ports Default settings for the “Tuner” Input. Refer to Setup “Data Port Assignment” on page 17.
10. Connect a Control Cable from the D1100 CD DATA PORT 3 Jack to the SACD/CD Transport Data In Jack.
11. Connect a Control Cable from the D1100 DATA PORT 1 Jack to the Media Server Data In Jack.
12. Connect any additional McIntosh Components in a similar manner, as outlined in steps 9 thru 11.

Sensor Connection:

13. Connect a Control Cable from the D1100 IR Input Connector to the external Sensor. For additional information, refer to “General Information” note 8 on page 3.

Digital Audio Connections:

14. Connect a Digital Coaxial Cable from the D1100 DIGITAL AUDIO INPUT COAX 1 Connector to the Digital Audio Player Digital Coax Output Jack.
15. Connect the “DIN Cable-Twisted Pair” cable (supplied with a MCT Transport) from the D1100 MCT DIGITAL AUDIO INPUT Connector to the SACD/CD Transport DIN Output Connector.

16. Connect a Digital Optical Cable from the D1100 DIGITAL AUDIO INPUT OPTI 2 Connector to the AM/FM Tuner Digital OPTICAL Output Connector.
17. Connect a Digital Coaxial Cable from the D1100 DIGITAL AUDIO INPUT OPTI 1 Connector to the Media Server Digital Optical Output Connector.
18. Connect any additional McIntosh Components in a similar manner, as outlined in steps 14 thru 17.

Optional USB Connection:

19. Connect a USB cable with (type A to type B) Connectors from the D1100 USB DIGITAL AUDIO INPUT connector to an available USB Connector on the computer.

Audio Output Connection:

20. Connect XLR Audio Cables from the D1100 OUTPUT 1 Balanced RIGHT and LEFT OUTPUTs to the Power Amplifier (Primary Room) Balanced (Left and Right) Inputs.
21. Optionally, connect XLR Audio Cables from the D1100 OUTPUT 2 Balanced RIGHT and LEFT OUTPUTs to the Power Amplifier (Secondary Room) Balanced (Left and Right) Inputs.
22. Optionally, connect XLR Audio Cables or Audio Cables from the D1100 FIXED OUTPUTs Balanced or Unbalanced, Right and Left Connectors/ or Jacks to an Analog Recording Device or another component with Analog Audio Input.

AC Power Cord Connections:

23. Connect the D1100 to a live AC Outlet using the supplied Power Supply Cord.

LEDs illuminate during the time a remote command is sent and when programming the remote control

Select the DEVICE to issue a remote control command to

SETUP Push-button is used as a "Shift Key" to select a function with blue color nomenclature

Selects AM Tuner Operating Functions, select Output 1 when used with the SETUP/shift Push-button and Track Selection on certain McIntosh CD Players

Press the Trim Push-button and then the LEVEL UP Push-button to select and adjust various functions. MENU is used with McIntosh Models displaying choices on a video screen

Activates the TRIM Mode. GUIDE is used with McIntosh Models displaying instructions on a video screen

Press the Trim Push-button and then the LEVEL DOWN Push-button to select and adjust various functions. INFO is used with McIntosh Models displaying information on a video screen

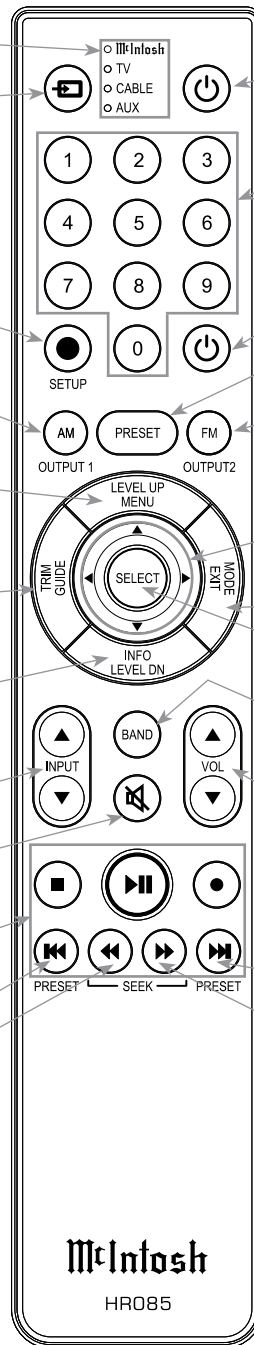
Scrolls through the available INPUTS

Mutes the audio

Selects transport functions of STOP, PLAY/PAUSE, RECORD, BACK for the previous-selection, FAST-REVERSE, FAST-FORWARD and NEXT for the next selection

Selects Previous Tuner Station PRESET

Tuner scans Down the dial to SEEK the next Station



Press to Power the Preamplifier ON

Use to select tuner presets, direct access an AM/FM Station Frequency, disc tracks or any numbered operation

Press to Power the Preamplifier OFF

Direct access to stored Tuner PRESETs when used with the numeric Push-buttons (0 thru 9)

Selects FM Tuner Operating Functions, select Output 2 when used with the SETUP/shift Push-button and Track Selection on certain McIntosh CD Players

Use ▲ and ▼ to tune Up or Down the AM/FM Dial, use ► and ◀ for the next or previous HD Radio Program (were applicable)

EXIT the TRIM Menu and is used with McIntosh Models displaying information or choices on a video screen

Used to SELECT/Enter the indicated choice

Press to change broadcast band on a connected Tuner. Select certain functions on a variety of McIntosh Models

Adjusts the VOLUME level up or down


Selects Next Tuner Station PRESET

Tuner scans Up the dial to SEEK the next Station

Note: Push-buttons whose function is not identified above are for use with other McIntosh Products.

How to use the Remote Control

The supplied D1100 Remote Control (HR085) is capable of directly controlling the functions of contemporary McIntosh Source Components connected to the D1100 via the Data Ports.

- Notes:*
1. If at any time the D1100 seems unresponsive to the HR085 Remote Control Commands, press the  DEVICE Push-button to select **McIntosh** first.
 2. For additional information on using the HR085 Remote Control, please refer to the "How to Operate" starting on page 20.
 3. For additional information on assigning the Data Ports, refer to "How to Setup" on page 13.

Trim

Press the TRIM Push-button until the desired Trim function (Balance, Trim Level, etc.) appears on the D1100 Front Panel Display, then press the LEVEL Up or Down Push-button to adjust the Trim setting.

Note: Press the TRIM Push-button to recall the last Trim function selected. For additional information on using the Trim Functions refer to "How to Operate" page 20.

Output Selection

Press the BLUE (Setup) Push-button followed by the AM (Output 1) or FM (Output 2) Push-button, to control the Rear Panel Audio OUTPUTS 1, 2 (ON or OFF) and Power Control TRIG 1 / TRIG 2.

Note: For additional information on assigning the Outputs (1 and 2) and Power Control Triggers (1 and 2) refer to pages 15 and 16.



Front Panel Displays, Controls, Push-buttons and Jack

INPUT Control used to select a source for listening and recording. The control is also used to enter the TRIM or SETUP Modes and select the various functions

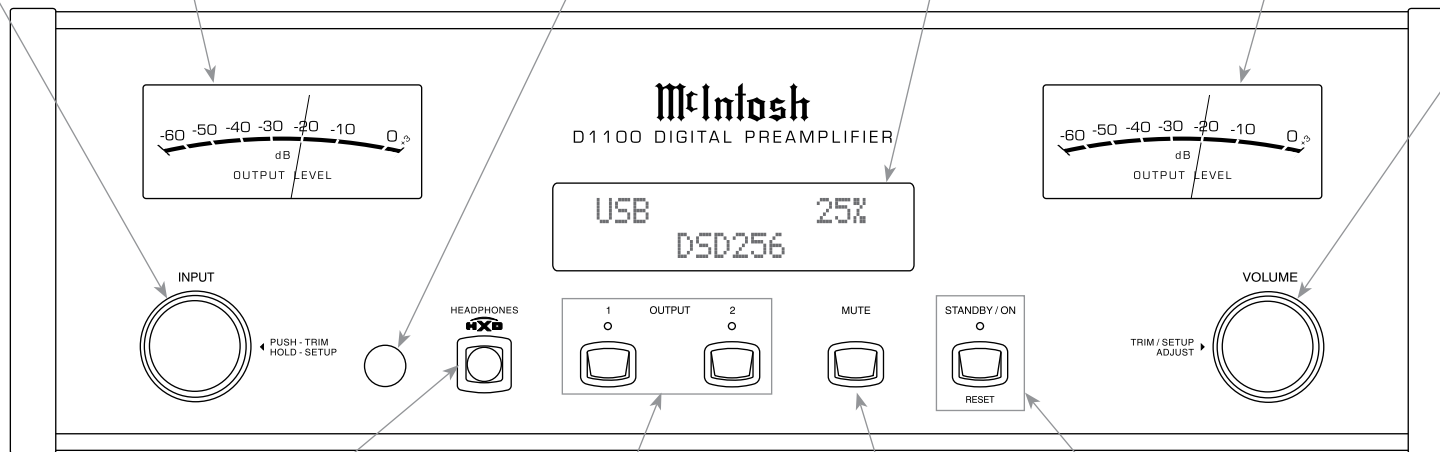
Meter indicates the Left Channel Output of the Preamplifier

IR Sensor receives commands from a Remote Control

INFORMATION DISPLAY indicates the Sources, Volume, other Audio Settings, Operational Functions and Setup Mode Settings

Meter indicates the Right Channel Output of the Preamplifier

VOLUME Control allows adjustment of the listening level for both channels. Also used to change the various TRIM and SETUP Functions



Connection for low impedance dynamic headphones, for private listening

OUTPUT 1 and 2 Push-buttons with indicators, switch the Preamplifier Outputs 1 and 2 On or Off

MUTE Push-button mutes the audio from the Loudspeakers and Headphones

STANDBY/ON Push-button with indicator, switches the D1100 ON or OFF (Standby) and resets the microprocessors

How to Operate the Setup Mode

Your McIntosh D1100 has been factory configured for default operating settings that will allow immediate enjoyment of superb audio without the need for further adjustments. If you wish to make changes to the factory default settings, a Setup Feature is provided to customize the operating settings using the Front Panel Information Display. Refer to the D1100 Front Panel Illustration on the previous page while performing the following steps.

Notes: 1. If the D1100 is connected to an Analog only Pre-amplifier, via the Pre-amplifier Data Interconnection Cable, AC Power to the Analog Pre-amplifier must be switched Off in order to use the D1100 SETUP MODE Features.

2. If the D1100 is currently On, proceed to step 2.


1. Press the STANDBY/ON Push-button on the Front Panel or press the  (Power ON) Push-button on the Remote Control to switch On the D1100. The D1100 will go through a brief startup initialization with the Front Panel Information Display indicating the last used source and volume setting. This is followed by the volume setting indication starting at zero and then increasing to the last used volume setting. Refer to figure 1.



Figure 1

2. Press and hold in the INPUT Control until the Front Panel Information Display indicates “D1100 V_._, S/N: AFG_” (or higher Firmware version). Refer to figure 2.



Figure 2

3. Rotate the INPUT Control to select the next Setup Mode Menu item, “SETUP: Inputs, (Hold INPUT)”. Refer to figure 3. Continue to rotate the INPUT CONTROL to view the other SETUP Mode Options.



Figure 3

4. To exit from the SETUP Mode, momentarily press in the INPUT Control and the Front Panel Display will revert back to its normal display. Refer to figure 1.

Default Settings

The Default Settings Chart below indicates the Function Name, Default Setting and the Page Number for additional information.

Default Settings		
Function Name	Setting	Page No.
D1100	V_._ - _.	13
INPUTS	On / Name	13
OUTPUTS (1 & 2)	Switched	15
TRIGGER (1 thru 4)	On	16
DATA PORTS (1 thru 4)	All Data	17
RS232 (Rate)	115200 Baud	17
IR Codes (Remote Control)	Normal	17
Front IR (Sensor)	Enabled	18
Auto-Off (Power Mode)	Enabled	18

Firmware Version

The D1100 functionality is controlled by internal software that is known as Firmware. The Version of the

Firmware in the D1100 can be identified at any time by utilizing the Setup Mode.

1. Press and hold in the INPUT Control to enter Setup Mode.
2. Referring to the Front Panel Information Display—the number after the character “V” is the Firmware number. Refer to figure 2.
3. To exit the Setup Mode, momentarily press the INPUT Control.

Input Settings

The D1100 provides the ability to switch unused INPUTS Off (or back On if they have been previously switched Off). The default INPUT Names can be changed to the name of the component connected to it or any custom name desired (within 10 Characters). **INPUT SWITCHED ON/OFF:**

In the following example, the COAX 3 Input will be switched Off.

Note: When an INPUT is switched Off, its name will no longer appear on the Front Panel Information Display when using the INPUT Control (Front Panel or Remote Control).

1. Press and hold in the INPUT Control to enter the SETUP MODE. Refer to figure 2.
2. Rotate the INPUT Control until “SETUP: Inputs, (HOLD INPUT)” appears on the Information Display. Refer to figure 3.
3. Press and hold in the INPUT Control until “SETUP: _____, On/Name (HOLD INPUT)” appears on the Display. If necessary rotate the VOLUME Control to select the COAX 3 Input. Refer to figure 4.

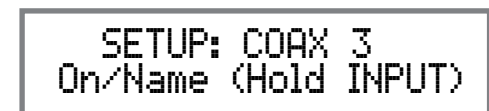


Figure 4



Input Settings, con't

- To switch the COAX 3 Input Off, rotate the INPUT Control until the display indicates "SETUP: COAX 3, Off". Refer to figure 5.



Figure 5

- Exit the SETUP Mode by several presses of the INPUT Control.

In the following example, the UNBAL 4 Input will be switched On.

Notes: 1. When an INPUT is switched ON, its name will appear on the Front Panel Information Display when using the INPUT Control (Front Panel or Remote Control).

- Press and hold in the INPUT Control to enter the SETUP MODE. Refer to figure 2, on page 13.
- Rotate the INPUT Control until "SETUP: Inputs, (Hold INPUT)" appears on the Information Display. Refer to figure 3, on page 13.
- Press and hold in the INPUT Control until "SETUP: _____, Off" appears on the Display. If necessary rotate the INPUT Control to select the COAX 3 Input. Refer to figure 5.
- To switch the COAX 3 Input On, rotate the VOLUME Control until the display indicates "SETUP: COAX 3, On / Rename". Refer to figure 4 on page 13.

- Exit the SETUP Mode by several presses of the INPUT Control.

RENAME INPUT:

In the following example, the Optical 1 (OPTI 1) Input will be renamed to match up with the component connected (refer to page 9, step 16).

The D1100 Default Input Names (OPTI 1, COAX 1, MCT, etc.) as indicated on the Front Panel Display can

be customized to a different name up to ten characters long (TUNER, CD PLAYER, etc.). The available characters for renaming the input include the following: ! < > * , / - _ 0 1 2 3 4 5 6 7 8 9 A B C D E F G H I J K L M N O P Q R S T U V W X Y Z .

In the following example, the OPTI 1 Input will be renamed to "MEDIA SVR".

- Press and hold in the INPUT Control to enter the SETUP MODE. Refer to figure 2, on page 13.
- Rotate the INPUT Control until "SETUP: Inputs, (Hold INPUT)" appears on the Information Display. Refer to figure 6.



Figure 6

- Press and hold in the INPUT Control until "SETUP: OPTI 1, On/Name (Hold INPUT)" appears on the Display. If necessary rotate the INPUT Control to select the OPTI 1 Input. Refer to figure 7.



Figure 7

- Press and hold in the INPUT Control until "RENAME: OPTI 1, > OPTI 1 <" appears on the Display. The character "O" is flashing to indicate it is ready to be changed. Refer to figure 8.



Figure 8

- Rotate the VOLUME (ADJUST) Control to change the character "O" to "M". Refer to figure 9.



Figure 9

- Rotate the INPUT Control until the character "P" is flashing, then rotate the VOLUME (ADJUST) Control to change the character "P" to "E". Refer to figure 10.



Figure 10

- Rotate the INPUT Control until the character "T" is flashing, then rotate the VOLUME (ADJUST) Control to change the character "T" to "D". Refer to figure 11.



Figure 11

- Rotate the INPUT Control until the "_" empty space to the right of character I is flashing, then rotate the VOLUME (ADJUST) Control to change the "_" empty space to character to "A". Refer to figure 12.



Figure 12

- Repeat steps 13 thru 18 until the new name of "RENAME: OPTI 1, MEDIA SVR" is indicated on the Front Panel Display. Refer to figures 13 thru 16.



```
RENAME: OPTI 1
>MEDIA * <
```

Figure 13



```
RENAME: OPTI 1
>MEDIA S * <
```

Figure 14



```
RENAME: OPTI 1
>MEDIA SU * <
```

Figure 15



```
RENAME: OPTI 1
>MEDIA SUR * <
```

Figure 16

20. To save the new name, press and hold in the INPUT Control until “SETUP: MEDIA SERVER, ON / Rename” appears on the Front Panel Information Display. Refer to figure 17.



```
SETUP: MEDIA SUR
On/Name (Hold INPUT)
```

Figure 17

21. Exit the SETUP Mode by several presses of the INPUT Control.

Note: For convenience, an “Input Assignment Chart” on a separate sheet “Mc5A/5B” has been provided to keep track of changes.

Output Settings

The Output Settings provide the ability to change how the D1100 Output 1, Output 2 and Headphones function.

OUTPUT 1 and 2:

By default OUTPUT 1 and 2 are set to go On/Off by using the Front Panel OUTPUT 1 and 2 Push-buttons or by using the OUTPUT 1 and 2 Push-buttons on the Remote Control. If it is desirable to have OUTPUT 1 and/or 2 always On, regardless of the OUTPUT 1 and 2 Push-button settings, perform the following:

1. Press and hold in the INPUT Control to enter the SETUP MODE. Refer to figure 2 on page 13.
2. Rotate the INPUT Control until “SETUP: Outputs, (Hold INPUT)” appears on the Information Display. Refer to figure 23.



```
SETUP: Outputs
(Hold INPUT)
```

Figure 23

3. Press and hold in the INPUT Control until “SETUP: OUTPUT 1, Switched” appears on the Display. Refer to figure 24.



```
SETUP: OUTPUT 1
Switched
```

Figure 24

4. Rotate the VOLUME (ADJUST) Control to change from the “Switched” setting to “Unswitched”. Refer to figure 25.



```
SETUP: OUTPUT 1
Unswitched
```

Figure 25

5. In a similar manner, perform steps 3 and 4 to change the OUTPUT 2 setting. Refer to figures 26 and 27.



```
SETUP: OUTPUT 2
Switched
```

Figure 26



```
SETUP: OUTPUT 2
Unswitched
```

Figure 27

The D1100 Default Setting for using Headphones is to automatically mute all the Output Connectors when the Headphone Cable Plug is inserted into the D1100 Front Panel HEADPHONES Jack. There are two available settings:

Mute All Outputs

Mute No Outputs

6. Rotate the INPUT Control until “SETUP: HEADPHONES, Mute All Outputs ” appears on the Information Display. Refer to figure 28.



```
SETUP: HEADPHONES
Mute All Outputs
```

Figure 28

7. Rotate the VOLUME (ADJUST) Control to change the current HEADPHONES setting from “Mute All Outputs” to either “Mute Main Output” or “Mute No Outputs”. Refer to figures 28 and 29.



```
SETUP: HEADPHONES
Mute No Outputs
```

Figure 29

8. Exit the SETUP Mode by several presses of the INPUT Control.

Power Control Triggers

By default the Power Control TRIGGER 1, TRIGGER 2, TRIGGER 3 and TRIGGER 4 switch ON when the D1100 is switched ON. All four Triggers can also be reassigned to a given Input or Inputs.

In the first example, the Power Control Triggers 1 and 2 will be reassigned from ON to OUTPUT 1 and OUTPUT 2 respectfully.

1. Press and hold in the INPUT Control to enter the SETUP MODE. Refer to figure 2 on page 13.
2. Rotate the INPUT Control until “SETUP: Triggers, (Hold INPUT)” appears on the Information Display. Refer to figure 30.

Figure 30

3. Press and hold in the INPUT Control until “SETUP: TRIGGER 1, On” appears on the Display. Refer to figure 31.

Figure 31

4. Rotate the VOLUME (ADJUST) Control to select from the available selections Output 1. Refer to figure 32.

Figure 32

5. In a similar manner, perform steps 3 and 4 to change the Trigger 2 setting from “On” to “Output 2”. Refer to figure 33 and figure 34.

Figure 33

Figure 34

The second example will use selection of Trigger 3 to activate when the OPTI 3 Input is selected. Refer to page 9 “Trigger Control Connections” and Connection Diagram located on the separate folded sheet “Mc2B”.

6. Rotate the INPUT Control to select “SETUP: TRIGGER 3, On” appears on the Display.
7. Rotate the VOLUME (ADJUST) Control to select “SETUP: TRIGGER 3, Input (HOLD Input)” appears on the Display. Refer to figure 35.

Figure 35

8. Press and hold in the INPUT Control until “SETUP: TRIGGER 3, USB: Off” appears on the Display. Refer to figure 36.

Figure 36

9. Rotate the INPUT Control to select “SETUP: TRIGGER, OPTI 3: Off”. Refer to figure 37.

Figure 37

10. Rotate the VOLUME (ADJUST) Control to select “SETUP: TRIGGER, OPTI 3: On”. Refer to figure 38.

Figure 38

11. Exit the SETUP Mode by several presses of the INPUT Control.

Data Ports

Data Ports Connections between the D1100 and a McIntosh Source Component, allow for basic function control of the source component using the D1100 supplied HR085 Remote Control. By default, all of the four Data Ports are set to send the same Data to the selected source. To dedicate a given Data Port for only one source component (example, source component connected to the OPTI 1 (MEDIA SERVER) Input will be assigned to Data Port 1) perform the following Steps:

1. Press and hold in the INPUT Control to enter the SETUP MODE. Refer to figure 2 on page 13.
2. Rotate the INPUT Control until "SETUP: Data Ports, (Hold INPUT)" appears on the Information Display. Refer to figure 39.



SETUP: Data Ports
(Hold INPUT)

Figure 39

3. Press and hold in the INPUT Control until "SETUP: DATA PORT 1, All Data" appears on the Display. Refer to figure 40.



SETUP: DATA PORT 1
All Data

Figure 40

4. Rotate the VOLUME (ADJUST) Control to select "OPTI 1" Input. Refer to figure 41.



SETUP: DATA PORT 1
OPTI 1

Figure 41

5. In a similar manner, perform steps 3 and 4 to assign any additional Data ports.
6. Exit the SETUP Mode by several presses of the INPUT Control.

Comm Port Baud Rate

The D1100 may be remotely controlled from other equipment connected to the Rear Panel RS232 Jack. The speed at which the D1100 communicates (8 bit, no parity and 1 stop bit) with other equipment is adjustable from 9,600 bits per second to 115,200 bits per second. To change from the default speed of 115,200 bits per second, perform the following steps:

1. Press and hold in the INPUT Control to enter the SETUP MODE. Refer to figure 2 on page 13.
2. Rotate the INPUT Control until "SETUP: RS232, 115200 Baud" appears on the Information Display. Refer to figure 42.



SETUP: RS232
115200 Baud

Figure 42

3. Rotate the VOLUME (ADJUST) Control to select the desired Baud Rate Speed.
4. Exit the SETUP Mode by several presses of the INPUT Control.

Remote Control Codes

The Remote Control included with the D1100 utilizes the NORMAL McIntosh Control Codes. The Second Set of Control Codes the D1100 will respond to is referred to as the ALTERNATE Codes. The Alternate Codes are used when the D1100 is used in the same location as another McIntosh Preamplifier and/or A/V Processor. This will prevent the Remote Control from affecting the operation of both units at the same time. To activate the Remote Control ALTERNATE Codes perform the following steps:

1. Press and hold in the INPUT Control to enter the SETUP MODE. Refer to figure 2 on page 13.
2. Rotate the INPUT Control until "SETUP: IR Codes, Normal" appears on the Information Display. Refer to figure 43.



SETUP: IR Codes
Normal

Figure 43

3. Rotate the VOLUME (ADJUST) Control to the Alternate Codes. Refer to figure 44.



SETUP: IR Codes
Alternate

Figure 44

4. It is now necessary to change the HR085 Remote Control over to the Alternate Codes. Information on the HR085 Remote Control is available for download from the McIntosh Web Site:
<http://www.mcintoshlabs.com/us/Products/pages/ProductDetails.aspx?CatId=preamplifiers&ProductId=D1100>
5. Exit the SETUP Mode by several presses of the INPUT Control.

IR Sensor

The D1100 Front Panel Sensor, which receives the signals from the HR085 Remote Control, can be switched off to prevent interference when an external IR Sensor is connected. To de-activate the Front Panel IR Sensor perform the following steps:

1. Press and hold in the INPUT Control to enter the SETUP MODE. Refer to figure 2 on page 13.
2. Rotate the INPUT Control until “SETUP: Front IR, Enabled” appears on the Information Display. Refer to figure 45.

SETUP: Front IR
Enabled

Figure 45

3. Rotate the VOLUME (ADJUST) Control to select Disabled. Refer to figure 46.

SETUP: Front IR
Disabled

Figure 46

5. Exit the SETUP Mode by several presses of the INPUT Control.

Power Mode

The D1100 incorporates an Auto Off Feature, which automatically places the preamplifier into the Power Saving Standby/Off Mode. This occurs approximately 30 minutes after there has been an absence of user activity (includes changes to any of the Operation Functions such as source selection, volume adjustment, etc.) or absence of an audio signal. If it is desirable to disable the Auto Off Feature, perform the following steps:

1. Press and hold in the INPUT Control to enter the SETUP MODE. Refer to figure 2 on page 13.
2. Rotate the INPUT Control until “SETUP: Auto Off, Enabled” appears on the Information Display. Refer to figure 47.

SETUP: Auto Off
Enabled

Figure 47

3. Rotate the VOLUME (ADJUST) Control to select Disabled. Refer to figure 48.

SETUP: Auto Off
Disabled

Figure 48

4. Press the EQ BYPASS/SETUP Push-button to exit the Setup Mode.

Factory Reset

If it becomes desirable to reset all the adjustable settings (Setup and Trim Settings) to the factory default values, perform the following steps:

1. Press and hold in the INPUT Control to enter the SETUP MODE. Refer to figure 2 on page 13.
2. Rotate the INPUT Control until “FACTORY RESET, (Hold INPUT)” appears on the Information Display. Refer to figure 49.

FACTORY RESET
(Hold INPUT)

Figure 49

3. Press and hold in the INPUT Control until “FACTORY RESET, In Progress!” appears on the Information Display, then release the INPUT Control. Refer to figures 50 and 51.

FACTORY RESET
In Progress!

Figure 50

FACTORY RESET
Completed!

Figure 51

4. Press the Front Panel STAND/BY Push-button to switch the D1100 on.


How to Operate the D1100 when in the DAC Mode

The D1100 has two modes of operation. The default mode of operation is as a Digital Preamplifier. Refer to page 20 for “How to Operate the D1100 as a Digital Preamplifier”.

The second mode of operation is as a Digital to Analog Converter (DAC) to be used with components such as an Analog only Preamplifier. Some of those Preamplifiers have a special “EXT CONTROL DATA CABLE CONNECTION” between the D1100 and the separate Analog only Preamplifier. Refer to page 8 for Connection information.

When the Analog only Preamplifier is switched On, it will automatically switch power On to the D1100. The D1100 Front Panel Left and Right Output Level Meters, Information Display and the STANDBY/ON Push-button are active. The remainder of the Front Panel Controls, Push-buttons and Remote Control IR Sensor are all deactivated. Refer to figure 60.

The Analog only Preamplifier selects the desired D1100 Input Source Component and passes on any Remote Control Commands to the selected Source Component. At any time, power to the D1100 can be

switched Off using the Front Panel STANDBY/ON Push-button. If power is switched Off to the connected Analog only Preamplifier, Power to the D1100 will also switch Off. If D1100 Power is switched On using the Front Panel STANDBY/ON Push-button or the Remote Control  (Power On) Push-button, the D1100 will return to the Digital Preamplifier Operation Mode. The following images are some examples of the Front Panel Information Display Indications during the time the D1100 is operating in the DAC Mode. For additional Information refer to “Control Panel Settings” and “USB Music Playback” on page 24.

44.1kHz

SACD

352.8kHz

DSD128

DSD256

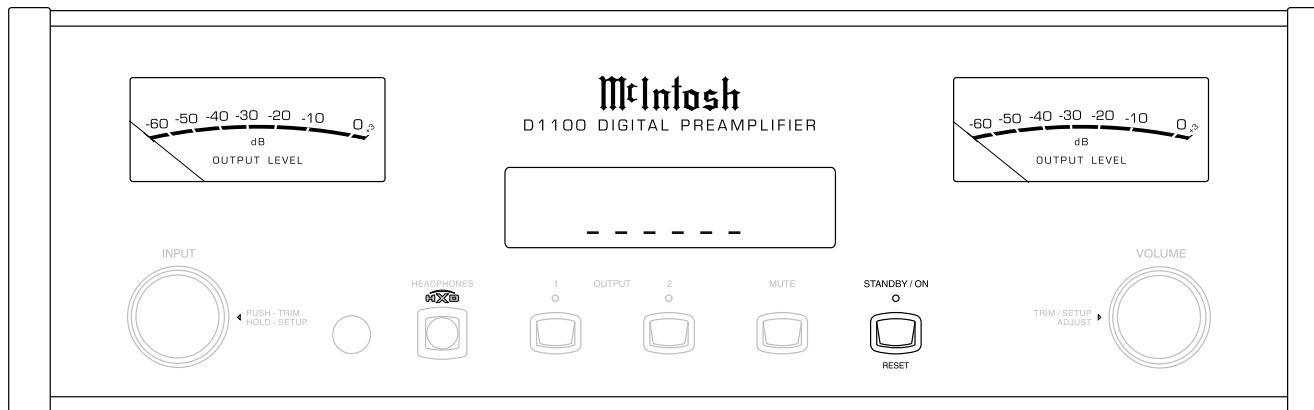
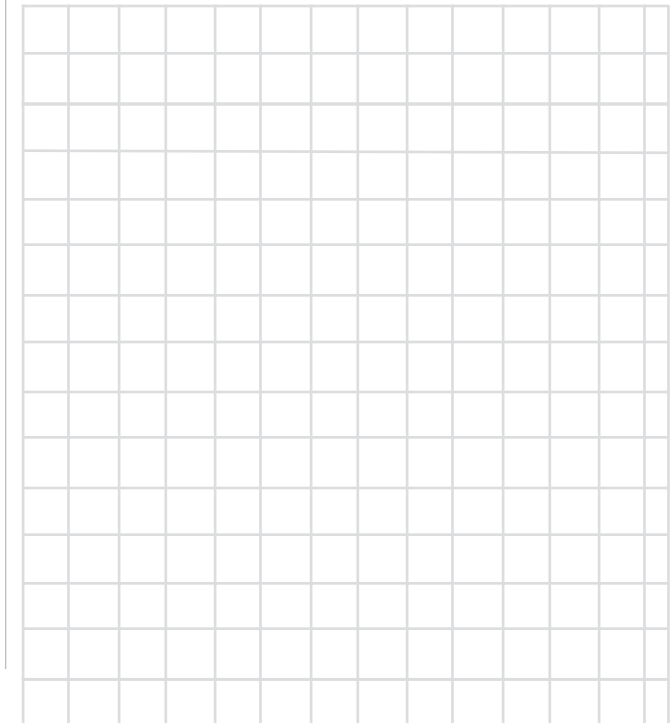


Figure 60



How to Operate the D1100

The D1100 has two modes of operation. The default mode of operation is as a Digital Preamplifier. If the D1100 is being used in the DAC Mode, refer to page 19 for “How to Operate the D1100 when in the DAC Mode”.

Power On and Off

The Red LED above the STANDBY/ON Push-button lights to indicate the D1100 is in Standby mode.

To switch ON the D1100, press the STANDBY/ON Push-button on the Front Panel or the (Power On) Push-button on the Remote Control. The D1100 will go through a brief startup initialization with the Front Panel Information Display indicating the last used source and volume setting. This is followed by the volume setting indication starting at zero and then increasing to the last used volume setting. Refer to figures 61, 62, 63 and 64. To switch OFF the D1100, press the STANDBY/ON Push-button on the Front Panel or the (Power Off) Push-button on the Remote Control.

Note: For an explanation of the Remote Control Push-button functions, refer to pages 10 and 11.

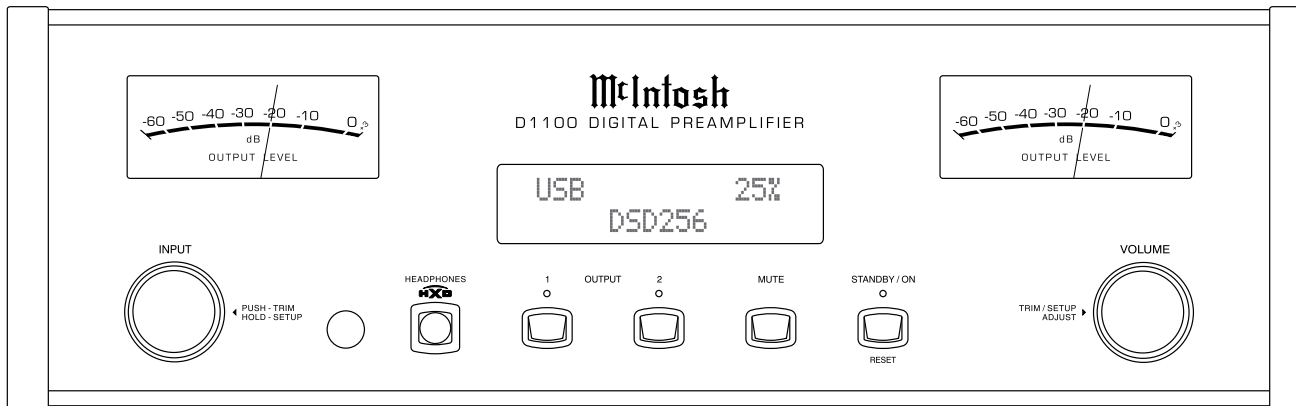


Figure 61



Figure 62

Source Selection

Rotate the INPUT Control to select the desired source or press the INPUT Up▲ or Down▼ Push-button on the Remote Control. Refer to figures 61, 63 and 64.



Figure 63

Volume Control

Rotate the Front Panel VOLUME Control or use the VOLUME Up▲ or Down▼ Push-buttons on the Remote Control for the desired listening level. Refer to figures 61 and 64.

Trim Functions

The D1100 has five different Trim Selections with

Adjustments. The Trim Selections include Balance, Meter Lights, Meter Level, Display Brightness, and when Headphones are connected, HXD Mode. The Trim Settings are stored in memory independently for each Input Source Selected, except the Meter Illumination and Display Brightness settings of On or Off, which are the same for all inputs.

Note: Selection and Adjustment of all Trim Functions may be performed by pressing the Front Panel INPUT Trim Control and then rotating it to select the desired Trim Function. Then use the VOLUME Adjust Control to change the setting. Remote Control TRIM Push-Button together with the LEVEL UP/Down Push-button may also be used. Refer to figures 61 and 64.

BALANCE

Listening balance varies with different program sources, room acoustics and listening positions relative to the Loudspeakers. Use the Balance (Trim Function) as needed to achieve approximately equal listening volume levels in each Loudspeaker. To adjust the Balance perform the following:

1. Press the TRIM Push-button repeatedly on the

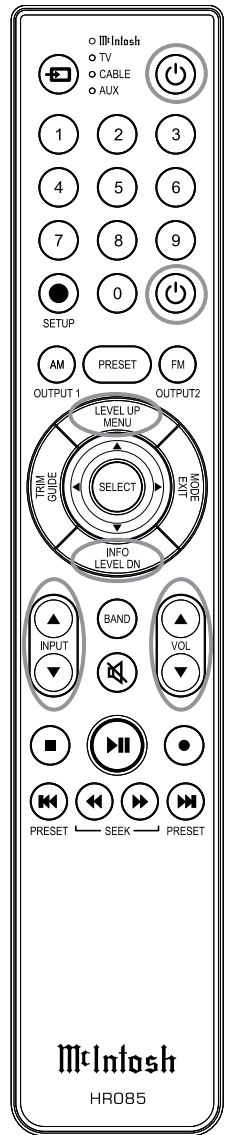


Figure 64

Remote Control until “L BALANCE R” appears on the Front Panel Information Display. Refer to figure 65.



Figure 65

Note: The Front Panel INPUT Trim and VOLUME Adjust Controls may also be used.

2. Press the LEVEL UP / DOWN Push-buttons on the Remote Control to emphasize the Right Channel (refer to figure 66) or the Left Channel (refer to figure 67).



Figure 66



Figure 67

The Front Panel Display indicates the Balance changes are from 0 to 50dB. After approximately 7 seconds the Information Display returns to indicate the Source Selection and Volume Level. To verify the Balance setting without changing it, use the TRIM Push-button and select Balance.

METER ILLUMINATION

The D1100 Front Panel Meter Illumination may be switched On or Off by performing the following:

1. Select “METER LIGHTS, On” as indicated on the Front Panel Information Display. Refer to figures 61, 64 and 68.
2. Switch Off the Meter Illumination. Refer to figure 69.



Figure 68



Figure 69

After approximately 7 seconds the Information Display returns to indicate the Source Selection and Volume Level.

Note: Meter Illumination of recent McIntosh Power Amplifiers will also switch On/Off when connected to the D1100 via a power control cable.

METER LEVEL

The D1100 Front Panel Meter has the ability to display either the Variable Output Level (Output 1 and Output 2) or Fixed Output Level, when the D1100 is in Digital Preamplifier Mode of Operation. The Front Panel Meters will automatically indicate the Fixed Level Output when the D1100 is in the DAC Mode of Operation. To change the Front Panel Meters from the default setting of Variable Out Level Display to Fixed Level Output Display perform the following steps:

1. Select “METER LEVEL, Variable - Output” as indicated on the Front Panel Information Display. Refer to figures 61, 64 and 70.

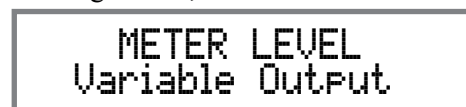


Figure 70

2. To change from Variable to Fixed Level, rotate the VOLUME Control. The Front Panel Information Display will now indicate “METER LEVEL, Fixed - Output”. Refer to figure 71.



Figure 71

After approximately 7 seconds the Information Display returns to indicate the Source Selection and Volume Level.

INFORMATION DISPLAY ILLUMINATION

The Brightness Level of the D1100 Front Panel Information Display can be adjusted from bright to dim by performing the following:

1. Select “DISPLAY BRIGHTNESS” as indicated on the Front Panel Information Display. Refer to figures 61, 64 and 72.



Figure 72

2. Reduce the Brightness level by adjusting the TRIM LEVEL. Refer to figure 73.



Figure 73

After approximately 6 seconds the Information Display returns to indicate the Source Selection and Volume Level.

HEADPHONE HXD

When headphones are connected to the D1100 Front Panel Jack, an additional TRIM function becomes available. McIntosh’s HXD brings the acoustical depth and spatiality of music normally heard with loudspeakers, to your headphones. The default settings is HXD On. To switch HXD Off perform the following:



How to Operate the D1100, con't

1. Momentarily press the INPUT Control, then rotate it to select "HEADPHONE HXD, On". Refer to figure 74.



Figure 74

2. To deactivate the HXD Mode rotate the VOLUME Adjust Control until the Front Panel Display indicates "HEADPHONE HXD, Off". Refer to figure 75.



Figure 75

Mute

Press the MUTE Push-button, on the D1100 Front Panel or on the Remote Control, to Mute the Audio in all outputs (Output 1, Output 2 and Headphones) except the FIXED OUTPUT. The Front Panel Information Display will indicate the Source Name and the word MUTE in place of the actual volume setting. Refer to figure 76.



Figure 76

Pressing the Mute Push-button a second time or adjusting the volume control (either the Front Panel or Remote Control) will unmute the D1100.

Output 1 and 2

Press the Front Panel OUTPUT 1 or OUTPUT 2 Push-button or use the Remote Control and press the SETUP/BLUE Push-button followed by the OUTPUT 1 or OUTPUT 2 Push-button, to send audio to separate Power Amplifiers connected to the rear panel OUTPUT 1 or 2 Connectors/Jacks. It also activates the POWER CONTROL TRIGGER 1 or 2 Jacks on the rear panel of the D1100. To stop the Audio and Power Control Signals from going to the separate Power Amplifiers, press the same Push-button(s) a second time.

Trim

Momentarily press the Front Panel INPUT Control to activate the D1100 Trim Functions. Rotate the INPUT

Control to select the desired Trim Function and then use the VOLUME (adjust) Control to change the Trim setting. Refer to figure 61. The Remote Control TRIM and LEVEL UP / DOWN Push-buttons may also be used. Refer to figure 64 on page 20. Approximately 7 seconds after Trim Function Selection and/or adjustments have stopped, the D1100 will switch the Trim Mode Off.

Output Meters

The D1100 Output Meters indicate the variable Output Level in Decibels (dB) available at the OUTPUT 1 and 2 Connectors/Jacks to drive Power Amplifiers. When the D1100 is in the Digital Preamplifier Mode, the TRIM "METER LEVEL" setting allows the Output Meters to monitor the FIXED OUTPUT Connectors/Jacks instead of the OUTPUT 1 and 2 variable output. Refer to figure 77. The Meters are calibrated in dB

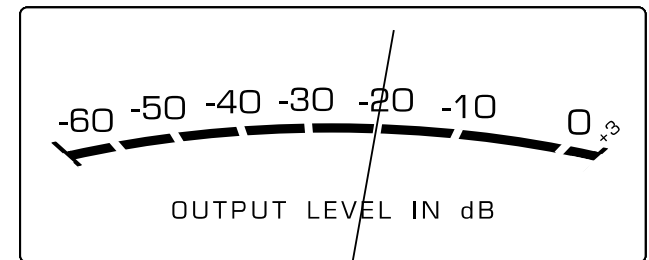


Figure 77

(decibels) and respond to all the peaks contained in the musical information. A meter reading of 0dB indicates the D1100 is delivering its rated output.

Headphones Jack

Connect a pair of dynamic headphones to the Headphones Jack with a 1/4" (0.635cm) stereo phone type plug for private listening. The default setting is for all of the Power Amplifier Output Connections (1 and 2)

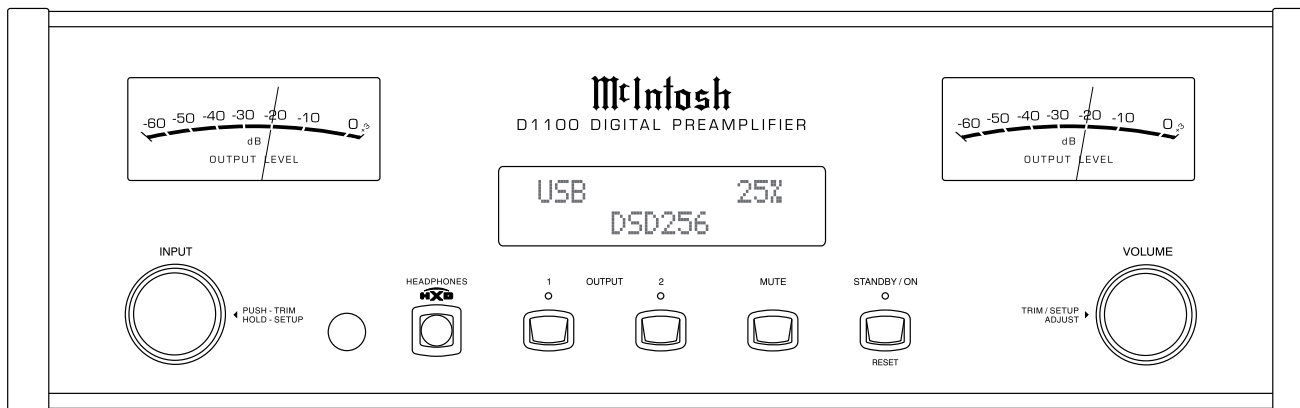


Figure 61

to automatically mute.

When headphones are connected to the D1100 Front Panel Jack, an additional TRIM function becomes available. McIntosh's HXD brings the acoustical depth and spatiality of music normally heard with loudspeakers, to your headphones.

Note: The Headphone Output is optimized for impedances ranging from 20 to 600 ohms.

How To Make a Recording

1. Select the desired signal source you wish to record by using the Front Panel INPUT Control or using the INPUT UP / DOWN Push-button on the Remote Control.
2. Adjust the record level using the recorder level control and proceed with the recording process.
3. Listen to the playback of the program source just recorded by selecting the Input Source connected to the recorder component output.

Digital Inputs Display

When an Input on the D1100 is selected, the Front Panel Information Display indicates the current sampling frequency (example "44.1kHz") when a signal is present. Refer to figure 78. During the time there is no Digital Signal present the display will indicate "-----". Refer to figure 79.

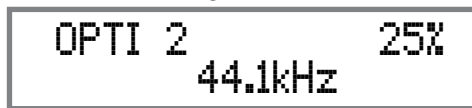


Figure 78



Figure 79

USB Input Operation and Driver Installation

The D1100 USB Input provides the capability to playback music from a computer, when the computer is connected to the rear panel USB connector.

Note: The USB Input is for direct connection to a computer only. To playback music from an USB Drive, connect the USB Drive to another USB Port on the computer and select the USB Drive with the Media Playback Program.

The D1100 USB Input is compatible with PC Computers using Microsoft®, Windows 7 (SP1), Windows 8.1 and Windows 10. It is also compatible with Apple® Macintosh® Computers using OS-10.6.8 or later.

When using a PC Computer with Windows, a special McIntosh USB Audio Software Driver needs to be installed on the PC Computer. The driver needs to be installed before connecting the D1100 USB Input to the USB Port on the computer.

Note: If an Apple Macintosh computer is used with the D1100, no additional driver is required.

The McIntosh USB Audio Windows Driver is available for download from the McIntosh Web Site: <http://www.mcintoshlabs.com/us/Support/Pages/Manuals.aspx>

Under "PRODUCT CATEGORY" select "Pre-amplifiers" then under "MODEL NUMBER" select "D1100". Click on "SEARCH" then select "McIntosh-HD USB Audio Windows Drive D v1.0 and download the PC Windows Driver. Follow the instructions below to install the McIntosh D1100 Driver:

Purpose: To Install the McIntosh USB Audio Windows Driver for use with McIntosh Products with an USB-Digital Audio Input.

Requirements: 1. A PC Computer with a functioning USB Port.

2. Windows 7 (SP1 or greater), Windows 8 (8.1) or Windows 10 Operating System.
3. An USB Cable with Type A to Type B Connectors.

Installing the Software

It is important to first install the downloaded software on your computer before connecting the McIntosh Product to the computer. The USB Driver is included in the downloaded software package.

Note: Before installing this software, please check to see if the McIntosh Product(s) with the USB-Digital Audio Input has the latest firmware version, if not update the firmware first.

1. Unzip the downloaded McIntosh Windows USB Driver Software Package.
2. Run "McIntoshHDSwPkg_20150814_v1p9p110p2.zip". Refer to figures 90 thru 97.

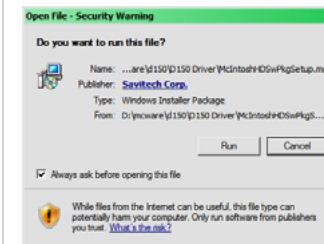


Figure 90

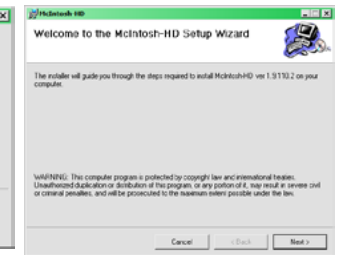


Figure 91

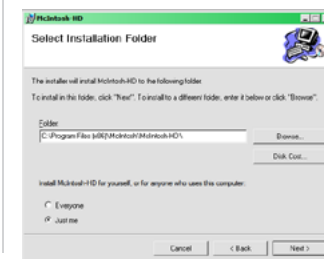


Figure 92

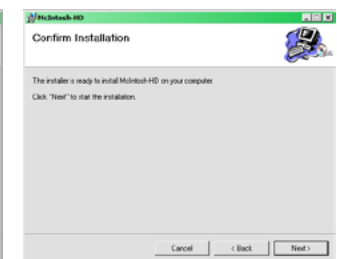


Figure 93



How to Operate the D1100, con't

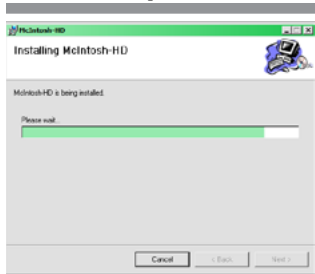


Figure 94

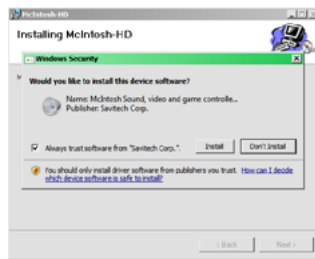


Figure 95

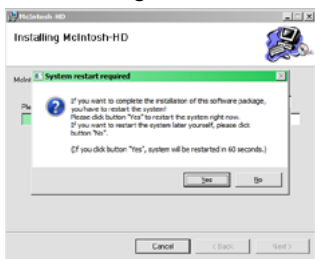


Figure 96

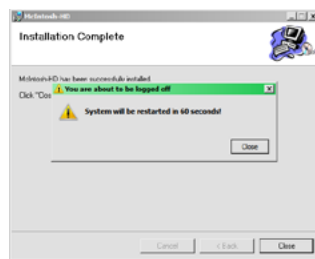


Figure 97

- When the Windows Security window appears check the *Always trust software from "Savitech Corp."* box and then the Install button. When the software has been installed, it is necessary to re-boot the computer. Refer to figure 96.

After rebooting, a McIntosh-HD icon will appear on the desktop. Refer to figure 98.

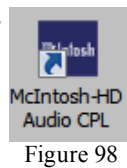


Figure 98

USB Connection

Connect the USB Cable with Type A to Type B connectors between the PC Computer and the McIntosh Product with the USB-Digital Audio Input. An Icon will appear On-Screen indicating Windows has found new hardware. Refer to figure 99.

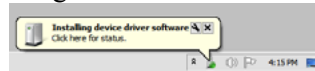


Figure 99

Upon completion of installing the driver, figure 100 will appear.

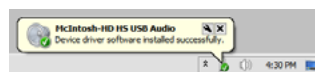


Figure 100

Windows Sound Settings

For proper operation of the McIntosh Product via the Computer USB Connection, it is required to make changes to Windows Sound Settings:

- From the Windows START button, click on "CONTROL PANEL" followed by selecting "SOUND". Refer to figure 101.
- Referring to figure 102, first select "McIntosh-HD HS USB Audio" and then click on the "Set Default" button.

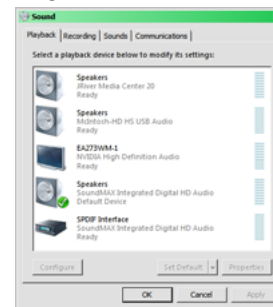


Figure 101

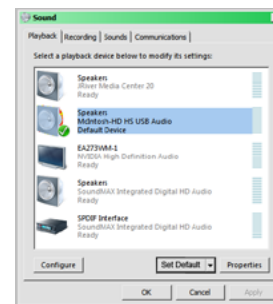


Figure 102

Notes: 1. When the McIntosh USB Audio Product is not connected to your computer, the previous default Audio Device will be selected.

- If other McIntosh Products with USB Audio Connections are also connected to the computer, an additional "McIntosh USB Audio" playback device will appear in the listing. Make sure to select the "McIntosh-HD HS USB Audio" from available playback devices listed when using this McIntosh Product for USB Audio.*

Control Panel Settings

To activate the McIntosh-HD USB Audio Control Panel Click on the "McIntosh Icon" (located in the Windows notification area on the right side of the taskbar)

or click on the Windows "Show hidden icons", then select the "McIntosh Icon". Refer to figures 103 and 104.

Notes: 1. It is not necessary for the McIntosh-HD USB Audio Control Panel to be running, unless it is desired to make changes to the default settings.

- The McIntosh-HD USB Audio Control Panel displays the current Sampling Rate, Bit-Rate and Buffer Size for the music streaming from the computer into the D1100.*
- When the Media Stream Program on the computer is set to output in the "ASIO" format, the McIntosh -HD USB Audio Control Panel allows for changing the settings parameters on the fly.*

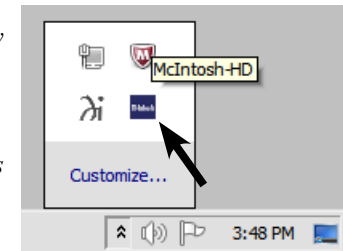


Figure 103

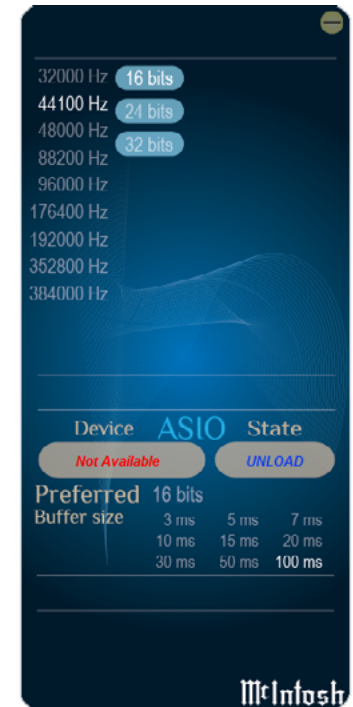


Figure 104

USB Music Playback

When the USB Input is selected on the McIntosh D1100, the Front Panel Display indicates the Sampling

Rate (refer to figures 105 and 106 for PCM Signals).



Figure 105



Figure 106

Figures 107 and 108 indicate a Sampling Rate of 128 or 256 times the Sampling Rate of a CD Disc for the incoming DSD Digital Audio Signal.



Figure 107



Figure 108

The Sampling Rate and the Bit Rate are determined by the original recording, the Application Output Format (when available) and the McIntosh-HD Control Panel Settings.

Note: In general, when the original music is recorded at a higher Sampling Rate, the result is usually more detail in the music. However, this higher rate results in consuming larger amounts of storage space. The Sample Rate usually should be set to match the Sample Rate of the music recording being played back.

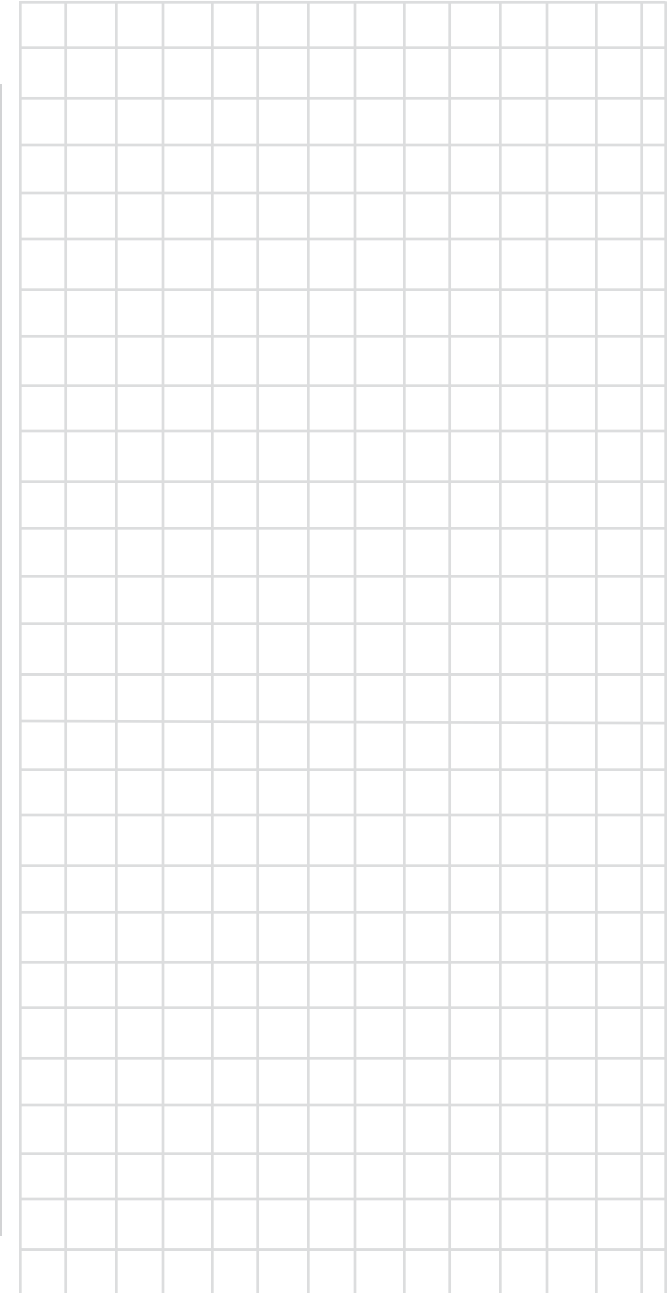
There are many third party Applications (besides Applications like Windows Media Player) for streaming music from the computer to McIntosh D1100 USB Input. An example of just one of the available applications is “JRiver Media Center”.

Reset of Microprocessors

In the unlikely event the controls of the D1100 stop functioning, the microprocessors can be reset by performing the following:

1. Press and hold in the STANDBY/ON Push-button until the LED above the STANDBY/ON Push-button illumination is extinguished. Then release the STANDBY/ON Push-button.
2. To switch the D1100 back On, press the STANDBY/ON Push-button.

Note: This can be performed with the D1100 On or in the Standby Mode.





Audio Specifications

Frequency Response

+/-0.5dB from 4Hz to 20,000Hz

+0.5/-3dB from 4Hz to 68,000Hz

Total Harmonic Distortion

0.0015% (at 2V Output)

Fixed Output level

2.0Vrms Unbalanced

4.0Vrms Balanced

Variable Output level

0 - 8.0Vrms Unbalanced

0 - 16.0Vrms Balanced

Signal To Noise Ratio (A-Weighted)

111dB

Dynamic Range

100dB

Output Impedance

100 ohms Unbalanced and Balanced

Headphone Load Impedance

20 to 600 ohms

Digital Audio Specifications

Digital Input Signal Format

Coaxial, Optical and AES/EBU Inputs - SPDIF (PCM)

MCT and USB Inputs - PCM, DSD

Digital Input Sample Rate

Coaxial, Optical and AES/EBU: 44.1kHz to

192kHz, 24-Bit

MCT: 44.1kHz, 16-Bit (CD)

DSD64 (SACD)

USB: 44.1kHz to 384kHz, 32-Bit (PCM)

DSD64, DSD128, DSD256,

DXD352.8kHz, DXD384kHz

Digital Inputs

Coaxial: 0.5V p-p/75 ohms

Optical: -15dbm to -21dbm (TOS Link)

MCT: 0.5V p-p/75 ohms

USB: USB Type B Connector

General Specifications

Power Control

12VDC, 25mA

Power Requirements

Field AC Voltage conversion of the D1100 is not possible. The D1100 is factory configured for one of the following AC Voltages:

100 Volts, 50/60Hz at 30 watts

110 Volts, 50/60Hz at 30 watts

120 Volts, 50/60Hz at 30 watts

220 Volts, 50/60Hz at 30 watts

230 Volts, 50/60Hz at 30 watts

240 Volts, 50/60Hz at 30 watts

Standby Power, less than 0.5 watts

Note: Refer to the rear panel of the D1100 for the correct voltage.

Overall Dimensions

Width is 17-1/2 inches (44.5cm)

Height is 6 inches (15.2cm) including feet

Depth is 19 inches (48.3cm) including the Front Panel, Knobs and Cables

Weight

26 pounds (11.8 kg) net, 41 pounds (18.6 kg) in shipping carton

Shipping Carton Dimensions

Width is 27 inches (68.6cm)

Height is 12 inches (30.5cm)

Depth is 25 inches (63.5cm)

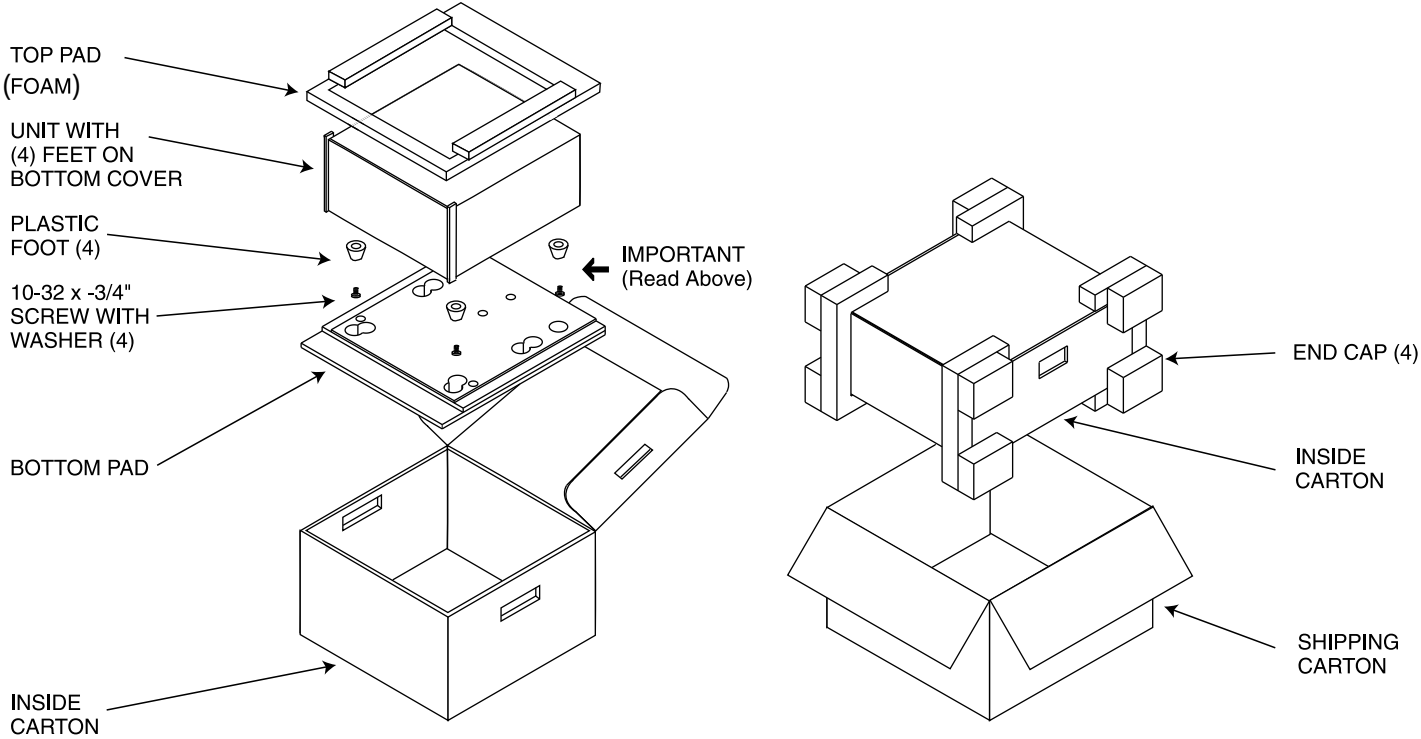
Packing Instructions

In the event it is necessary to repack the equipment for shipment, the equipment must be packed exactly as shown below. It is very important that the four plastic feet are attached to the bottom of the equipment.

This will ensure the proper equipment location on the bottom pad. Failure to do this will result in shipping damage.

Use the original shipping carton and interior parts only if they are all in good serviceable condition. If a shipping carton or any of the interior part(s) are needed, please call or write Customer Service Department of McIntosh Laboratory. Refer to page 2. Please see the Part List for the correct part numbers.

Quantity	Part Number	Description
1	033838	Shipping carton only
2	033837	Side foam pad
1	033836	Inside carton only
1	034414	Top foam pad
1	034574	Bottom pad
4	017937	Plastic foot
4	400159	#10-32 x 3/4" screw
4	404080	#10-7/16" Flat washer





McIntosh Laboratory, Inc.
2 Chambers Street
Binghamton, NY 13903
www.mcintoshlabs.com

The continuous improvement of its products is the policy of McIntosh Laboratory Incorporated who reserve the right to improve design without notice.
Printed in the U.S.A.